

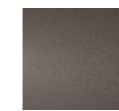


ALVEA

design Marco Lavit

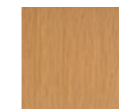
Triangular console with supporting structure in 8 mm thick steel sheet painted with epoxy powders in burnished colour; panels in 20 mm thick MDF veneered in oak, with top consisting of 20x20 mm section elements of solid oak set in a grating shape, enclosed by a 50x20 mm section perimeter frame, all in solid oak. Wood parts in oak. Support on the floor guaranteed by thermoplastic material supports.

Supporting Structure



Burnished
Painted Steel

Structure



Natural Oak

Technical Drawings

